



Contents

- 1.
- 2.
- 3.
- 4.
- 5.
- 6.



- 1.
- 2.
- 3.
- 4.
- 5.
- 6.



- 1.
- 2.
- 3.
- 4.
- 5.
- 6.



- 1.
- 2.
- 3.
- 4.
- 5.

2023





About Honz

300086

“ ”

“ ” “ ”

2018

2020

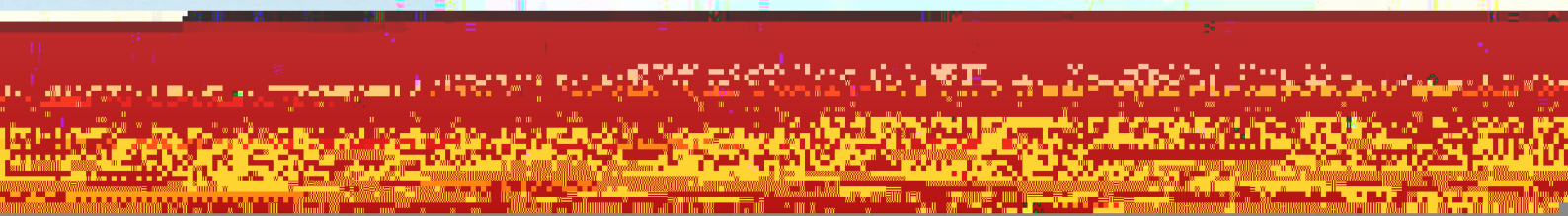
8

EN ISO 13485:2016

2020

9

8P

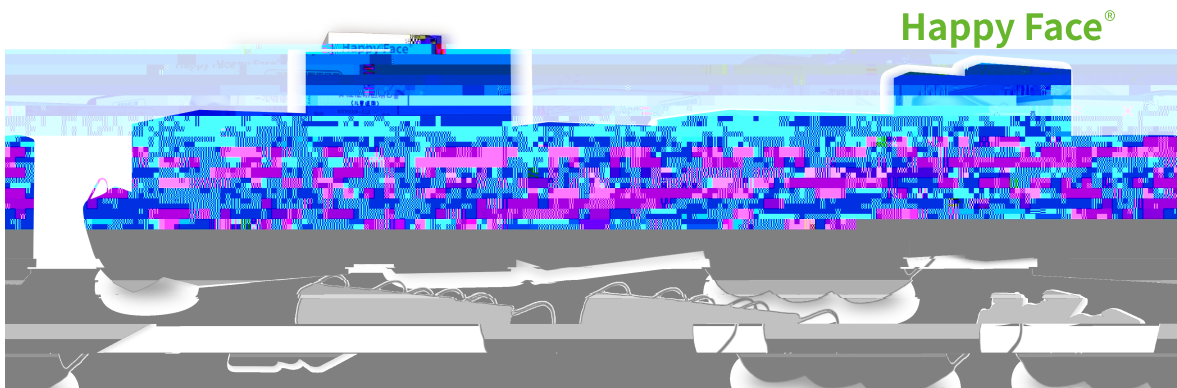


® ® ® ® ®



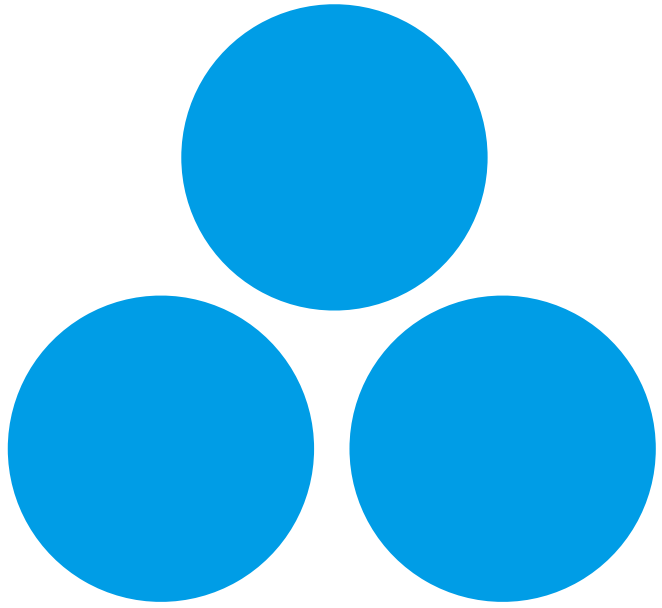
Happy face®

2022



Happy Face®





2007

2008

2009

2010

2011

2012

2013

500

2014

2015

2016

2017

2018

2019

2020

2021

"

"

50

ESG

TOP100

2022

31

2022

44

2021

2022

2022

2022

2022

" "

2021

2022

-

2022

2022

"

"

2022

2022

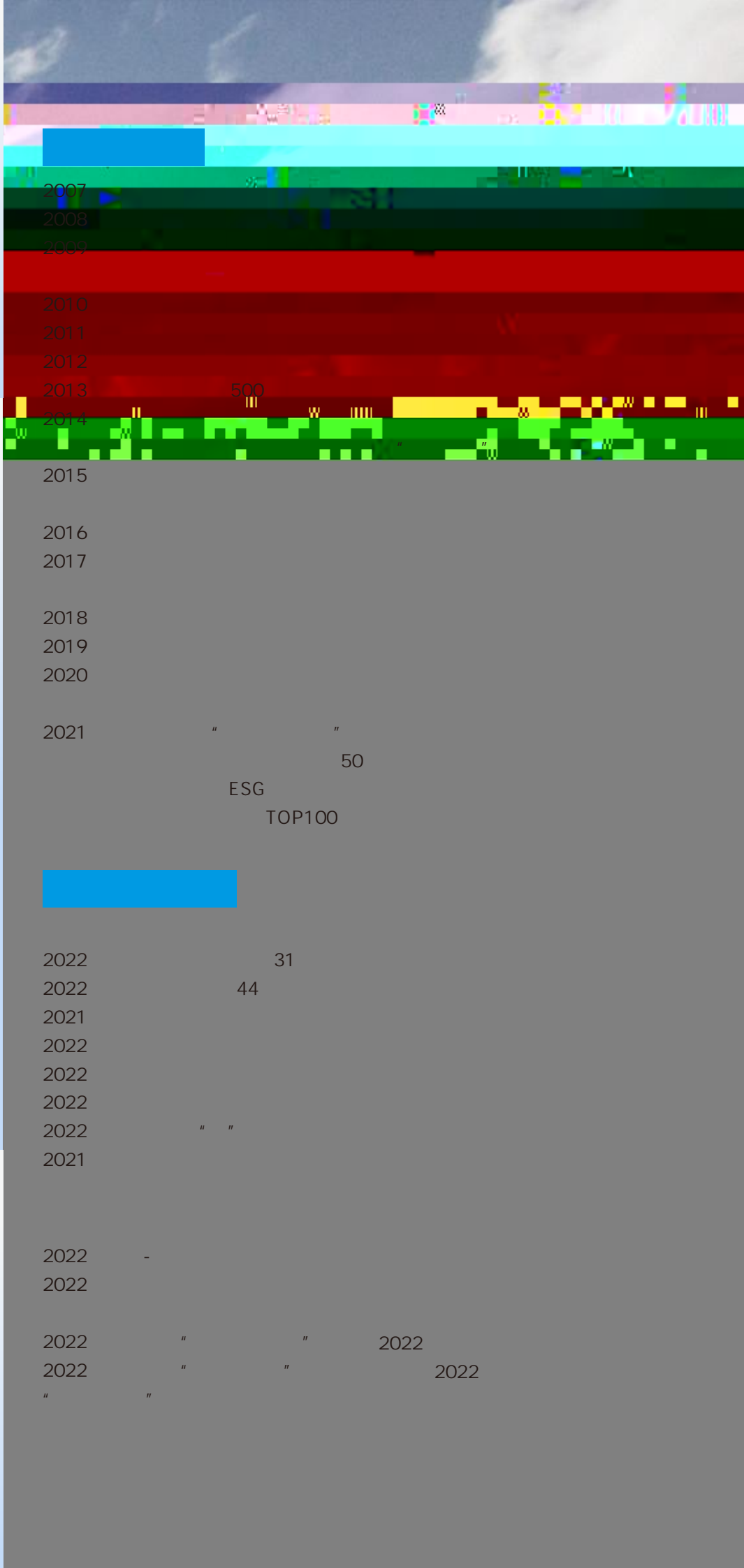
"

"

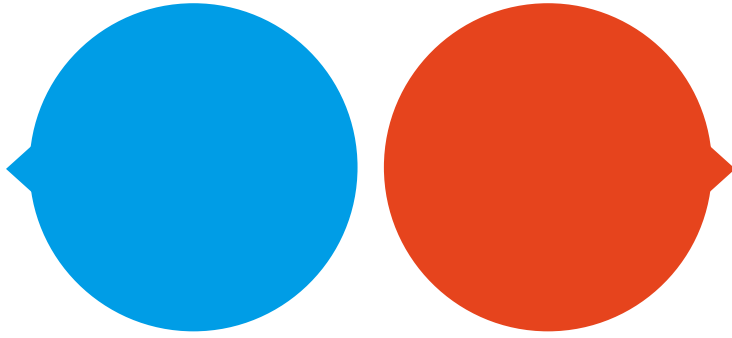
2022

"

"



" " " "



ESG ESG

ESG

ESG ESG

ESG ESG
ESG

ESG ESG
ESG ESG
ESG ESG





Introduction Of The Management System For Environment



1

1

2

3

4

5

6

Description Of Pollution

200 2022 16259.74 54.20

2022			
		2022	
	/		
COD			

2 /h 2022

2022			
		2022	

2022

2022			
		2022	
	/		



2022			
		2022	
COD			



SO₂ NO_x

—

2022			
SO			
NOx			

2022			
CODcr			
- N			

2022			

3 / 2022

650

2.6

2V B Of " 200f





The Usage Of Resources And Energy

2022		
		2022
	/	
	/	

2022		
		2022
	/	
	/	

2022		
		2022

2022			

2022		
		2022
	/	
	/	
95#		
98#		
	/	

Greenhouse Gas Emissions And Measures To Address Climate Change

2

3

4

2022		
		2022
	/	

2022		
		2022
	g/L	

■ 1646868 2022 1.06 / 1641.19 2022 1282310.62 2022 4 2022 1209727 2023 2021

■ 11.6 8.88 2023 2022

Energy Conservation Measures And Use Of Clean Energy

■

2022

1

2

3

4

5

6

5

LED

2022

■

2022

79.72%

2021

■

2022

2021

2022

0.2

2022

4.3

2

■

2022

2022



2022 4 2022 164.69 120.97
43.71



2022 2022 71.98
16.58 2021 11.64 2021 8.88
2022





Construction Of Emergency Management System

"

"

(2021

)

"

"

■

2022

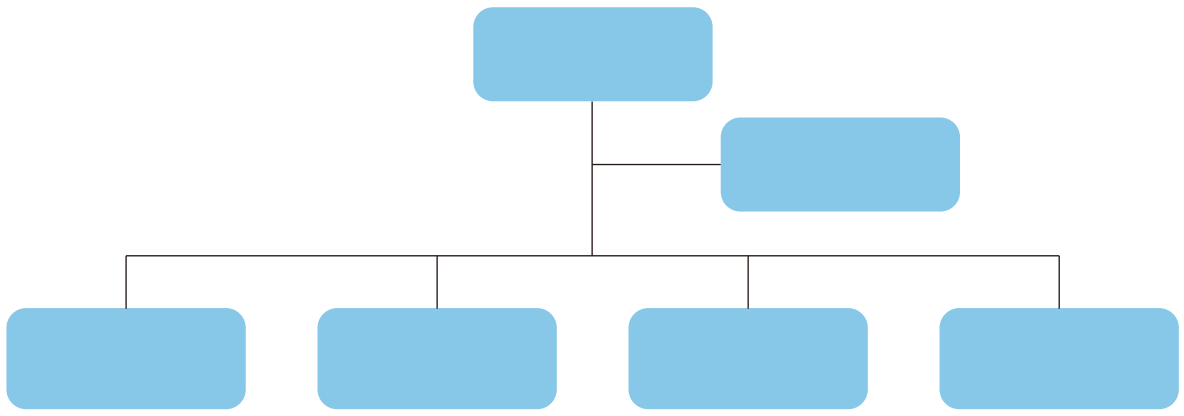
■

"

"

"

"



[Dark Blue Header Bar]								
[Blue]	[Blue]	[Blue]	[Blue]					[Blue]
			[Blue]	[Blue]	[Blue]	[Blue]	[Blue]	
[Blue]	[Blue]	[Blue]	✓	✓		✓	✓	[Blue]
[Light Blue]	[Light Blue]	[Light Blue]	✓	✓		✓	✓	[Light Blue]
[Blue]	[Blue]	[Blue]	✓		✓		✓	[Blue]
[Light Blue]	[Light Blue]	[Light Blue]	/	✓	✓			[Light Blue]
[Blue]	[Blue]	[Blue]	/	✓	✓	✓	✓	[Blue]

			20	
			2	
			15	
			60	
			600	
			5	
			2	
			4	
			1	
			1	
			4	
			20	
			64	
			64	
			64	
			140	
			185	





Product safety And Responsibilities

1

GMP ICH ISO ISPE WHO

GMP

OOS/OOT

GMP

2022

0.1g

0.1g

-

GMP

7

2022

34

10

100%

2022

2

1

2022 1 25

GMP

2022

8

4

100%

2

0898- 66802060

400- 8866- 126

3

5

ISO 22716

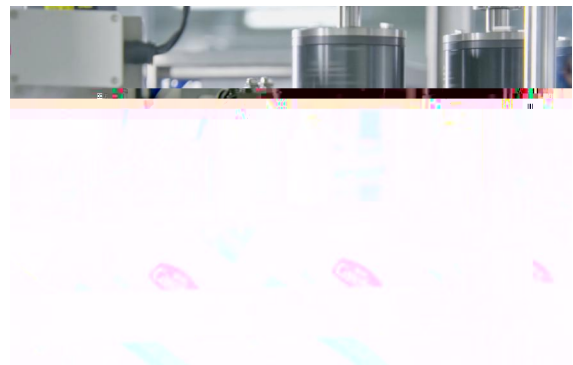
-

GMP

10

RO

ERP





Privacy And Information Security



Protection Of Employees' Rights

" "



1

" "

2

" "

3

4

2022

2022

2013

2022

1



2

3

"

" "

" "

"

"

"

4

"

"

A B C D

C

D





2022

"

"

" 2022

"



2022

"

"

3

8

" "

2022



2011 9 23

" "

" "

2022

"

"

" "

“ ”

14

“ ”



19

“ ” “ ”

“ ”

2 18

10

10

A

B

8 29

1412

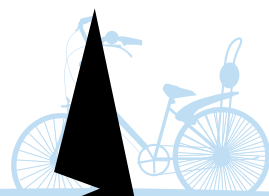
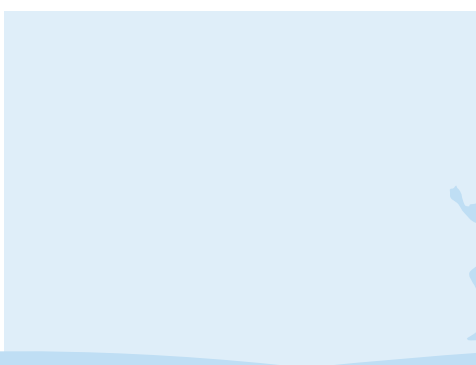
436

"

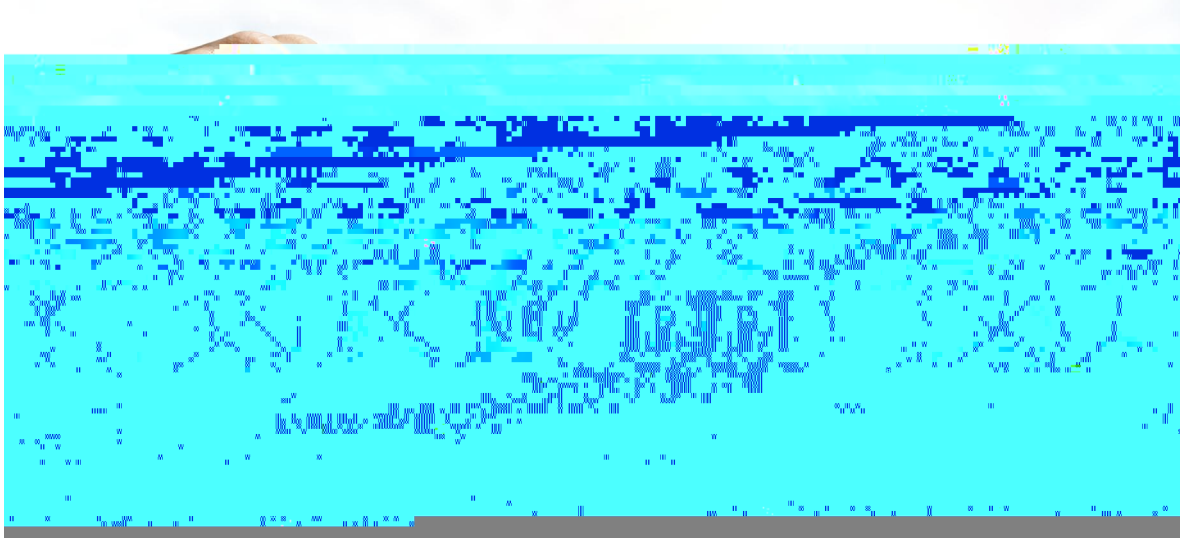
"

A

B



Board Of Directors



7

3

1/3

2 ---

2 ---

1

2022

" "

2

2021

2022

10%

2022

2

9

8

3

2022 12 31

0

2022 12 31
5

21

"

"

2022

"

"

Jointly Built By The Party And Trade Unions

2010 6

21

260

100%

2013

2022

OA

"

"

"

"





Investor Relations Management



2021

www.cninfo.com.cn

1.

2.

" "

3.



Uphold the Rights And Interests Of Shareholders

2022

88

135

Guarantee The Rights Of Shareholders To Participate In Company's Decision- marking

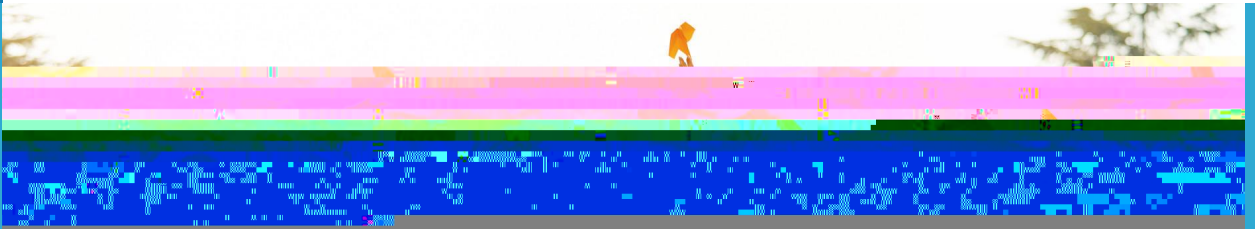
30%

2021	0	10,987,504.99	0
2020	9,000,000	9,339,252.11	96.37%
2019	0.00	- 26,462,980.18	0.00%



2023

Commitment Of Responsibility For 2023



2022

"

"

2023

"

"

2023